

BODY MEASUREMENTS

NECK

Measure around the middle of your neck, leaving the tape loose.

WAIST

Measure around your natural waist, keeping the tape a bit loose.

CHEST

Measure under your arms around the fullest part of your chest.

SLEEVE LENGTH

Measure from the back of your neck across the top of your shoulder to your elbow, and down to your wrist.



SLIM FIT MEASUREMENTS

Our modern, tapered fit. Also, our most popular fit.

SIZE	XS	S	M	L	XL	XXL
NECK	13 ½–14"	14–14 ½"	15–15 ½"	16–16 ½"	17–17 ½"	18–18 ½"
CHEST	32–34"	35–37"	38–40"	41–43"	44–46"	47–49"
WAIST	26–28"	29–31"	32–34"	35–37"	38–40"	41–43"
SLEEVES	31–32"	32–33"	33–34"	34–35"	35–36"	36–37"

REGULAR FIT MEASUREMENTS

A more traditional fit with extra room in the chest, arms, and waist. Compared to the slim fit, the regular fit is 1" larger in the chest and armhole and 2" larger in the waist.

SIZE	XS	S	M	L	XL	XXL
NECK	13 ½–14"	14–14 ½"	15–15 ½"	16–16 ½"	17–17 ½"	18–18 ½"
CHEST	33–35"	36–38"	39–41"	42–44"	45–47"	48–50"
WAIST	28–30"	31–33"	34–36"	37–39"	40–42"	43–45"
SLEEVES	31–32"	32–33"	33–34"	34–35"	35–36"	36–37"

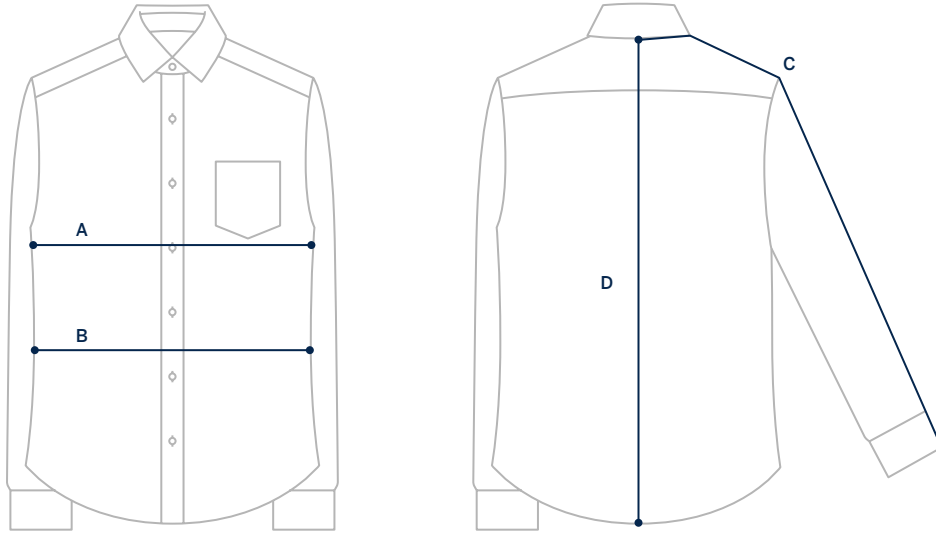
TALL FIT MEASUREMENTS

Same as regular fit, with 1 ½" longer sleeves and 2" longer body.

WOVEN SHIRTS

GARMENT MEASUREMENTS

The most precise way of finding your size. Measure a garment you love and compare to our garment measurements.



SLIM FIT MEASUREMENTS

Our modern, tapered fit. Also, our most popular fit.

SIZE	XS	S	M	L	XL	XXL
A: CHEST	18 ⁷ / ₈ "	20 ³ / ₈ "	21 ⁷ / ₈ "	23 ³ / ₈ "	24 ⁷ / ₈ "	26 ³ / ₈ "
B: WAIST	17 ³ / ₈ "	18 ⁷ / ₈ "	20 ³ / ₈ "	21 ⁷ / ₈ "	23 ³ / ₈ "	24 ⁷ / ₈ "
C: SLEEVES	33"	34"	35"	36"	37"	38"
D: LENGTH	29 ¹ / ₂ "	30"	30 ¹ / ₂ "	31"	31 ¹ / ₂ "	32"

REGULAR FIT MEASUREMENTS

A more traditional fit with extra room in the chest, arms, and waist. Compared to the slim fit, the regular fit is 1" larger in the chest and armhole and 2" larger in the waist.

SIZE	XS	S	M	L	XL	XXL
A: CHEST	19 ³ / ₈ "	20 ⁷ / ₈ "	22 ³ / ₈ "	23 ⁷ / ₈ "	25 ³ / ₈ "	26 ⁷ / ₈ "
B: WAIST	18 ³ / ₈ "	19 ⁷ / ₈ "	21 ³ / ₈ "	22 ⁷ / ₈ "	24 ³ / ₈ "	25 ⁷ / ₈ "
C: SLEEVES	33"	34"	35"	36"	37"	38"
D: LENGTH	29 ¹ / ₂ "	30"	30 ¹ / ₂ "	31"	31 ¹ / ₂ "	32"

TALL FIT MEASUREMENTS

Same measurements as regular fit, with 1 ¹/₂" longer sleeves and 2" longer body.

SIZE	XS	S	M	L	XL	XXL
A: CHEST	-	20 ⁷ / ₈ "	22 ³ / ₈ "	23 ⁷ / ₈ "	25 ³ / ₈ "	26 ⁷ / ₈ "
B: WAIST	-	19 ⁷ / ₈ "	21 ³ / ₈ "	22 ⁷ / ₈ "	24 ³ / ₈ "	25 ⁷ / ₈ "
C: SLEEVES	-	35 ¹ / ₂ "	36 ¹ / ₂ "	37 ¹ / ₂ "	38 ¹ / ₂ "	39 ¹ / ₂ "
D: LENGTH	-	32"	33 ¹ / ₂ "	33"	33 ¹ / ₂ "	34"

Looking for help with a size? Contact us at help@woolandprince.com