

T-SHIRT

BODY MEASUREMENTS



CHEST

Measure around your torso, under your arms around the fullest part of your chest.

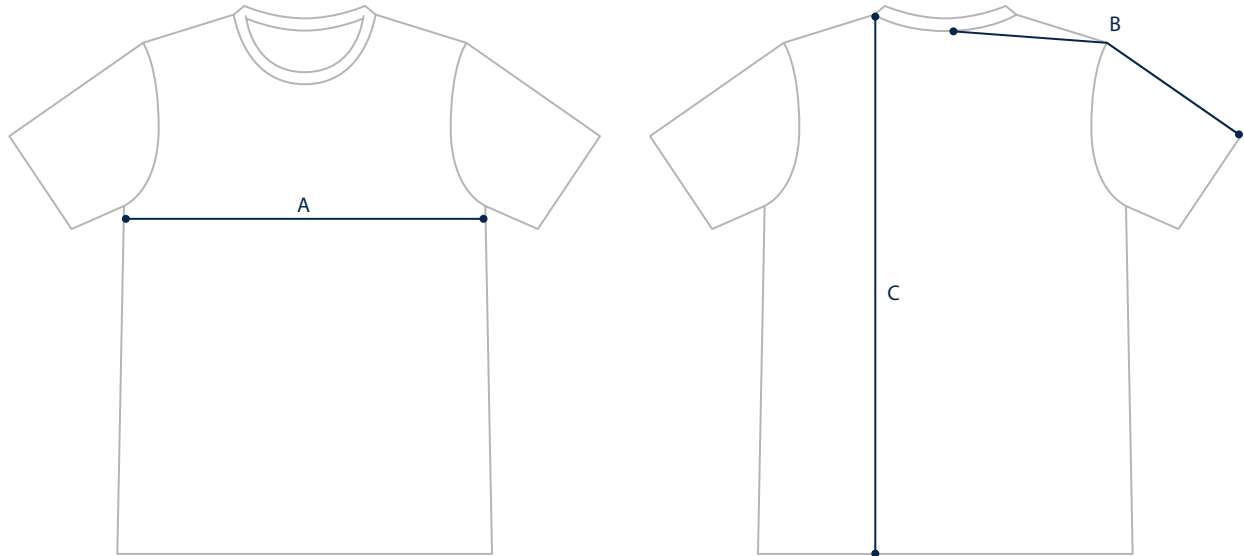
MEASUREMENTS

| SIZE | XS | S | M | L | XL | XXL |
|-------|--------|--------|--------|--------|--------|--------|
| CHEST | 32-34" | 35-37" | 38-40" | 41-43" | 44-46" | 47-49" |

T-SHIRT

GARMENT MEASUREMENTS

The most precise way of finding your size. Measure a garment you love and compare to our garment measurements.



MEASUREMENTS

| SIZE | XS | S | M | L | XL | XXL |
|------------|-------|-------|-------|-------|-------|-------|
| A: CHEST | 17 ½" | 19" | 20 ½" | 22" | 23 ½" | 25 " |
| B: SLEEVES | 16 ¼" | 16 ⅞" | 17 ½" | 18 ⅛" | 18 ¾" | 19 ⅜" |
| C: LENGTH | 27" | 27½ " | 28" | 29" | 30" | 31" |

Looking for help with a size? Contact us at help@woolandprince.com