

BODY MEASUREMENTS



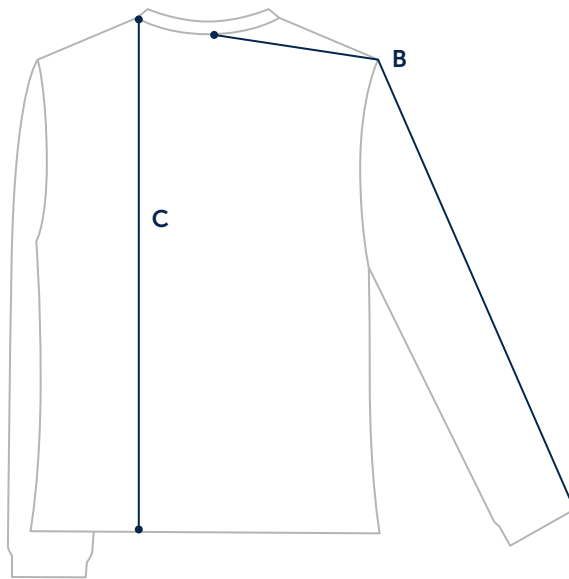
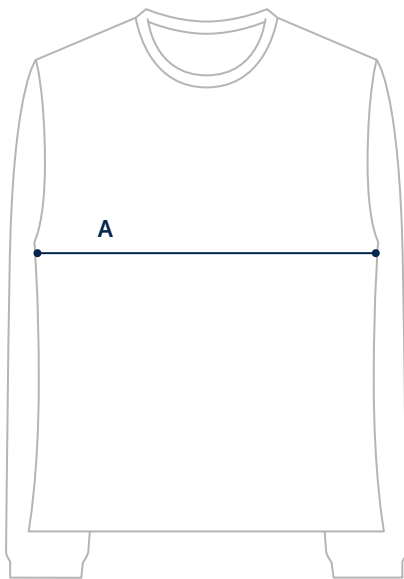
CHEST

Measure under your arms around the fullest part of your chest.

SIZE	S	M	L	XL	XXL
CHEST	35-37"	38-40"	41-43"	44-46"	47-49"

GARMENT MEASUREMENTS

The most precise way of finding your size. Measure a garment you love and compare to our measurements.



A. CHEST

Measure width 1" below arm hole.

B. SLEEVE

Measure from center back to hem.

C. LENGTH

Measure from high point shoulder to bottom hem.

SIZE	S	M	L	XL	XXL
A: CHEST	20"	21 1/2"	23"	24 1/2"	26"
B: SLEEVE	34 1/4 "	34 3/4 "	35 1/4 "	35 3/4 "	36 1/4 "
C: LENGTH	27"	27 1/2 "	28 1/4 "	29"	29 3/4 "