

GARMENT MEASUREMENTS.



CHEST

Measure under your arms around the fullest part of your chest.

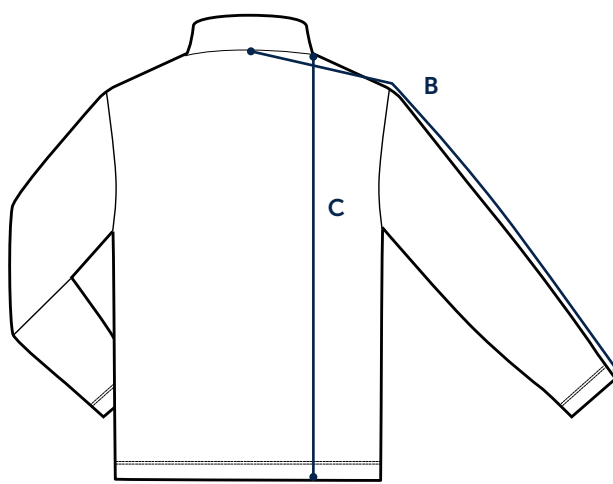
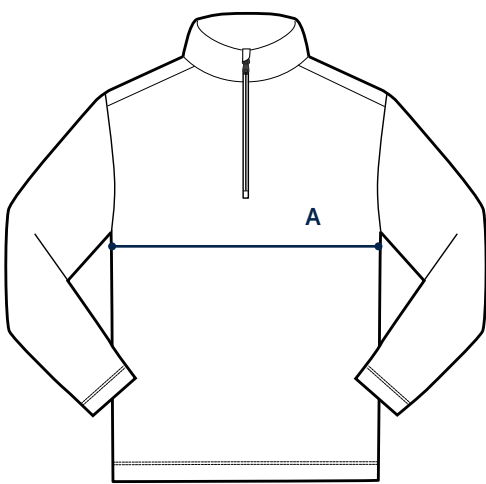
SLEEVE LENGTH

Measure from the back of your neck across the top of your shoulder to your elbow, and down to your wrist.

| JACKET SIZE | S | M | L | XL | XXL |
|-------------|--------|--------|--------|--------|--------|
| CHEST | 35–37" | 38–40" | 41–43" | 44–46" | 47–49" |
| SLEEVE | 32–33" | 33–34" | 34–35" | 35–36" | 36–37" |

GARMENT MEASUREMENTS

The most precise way of finding your size.
Measure a garment you love and compare to our measurements.



A. CHEST WIDTH

Measure across chest, 1" below the armhole.

B. SLEEVE LENGTH FROM CENTER BACK

Measure down the length of the sleeve, starting at center back.

C. LENGTH

Measure from high point shoulder to bottom hem.

| JACKET SIZE | S | M | L | XL | XXL |
|------------------|-------|-------|-------|-------|-------|
| A: CHEST | 19" | 20 ½" | 22" | 23 ½" | 25" |
| B: SLEEVE LENGTH | 34 ½" | 35" | 35 ½" | 36" | 36 ½" |
| C: LENGTH | 27 ½" | 28" | 28 ¾" | 29 ½" | 30 ¼" |