

KNIT BUTTON-DOWN SHIRT

BODY MEASUREMENTS



WAIST

Measure around your natural waist, keeping the tape a bit loose.

CHEST

Measure under your arms around the fullest part of your chest.

SLEEVE LENGTH

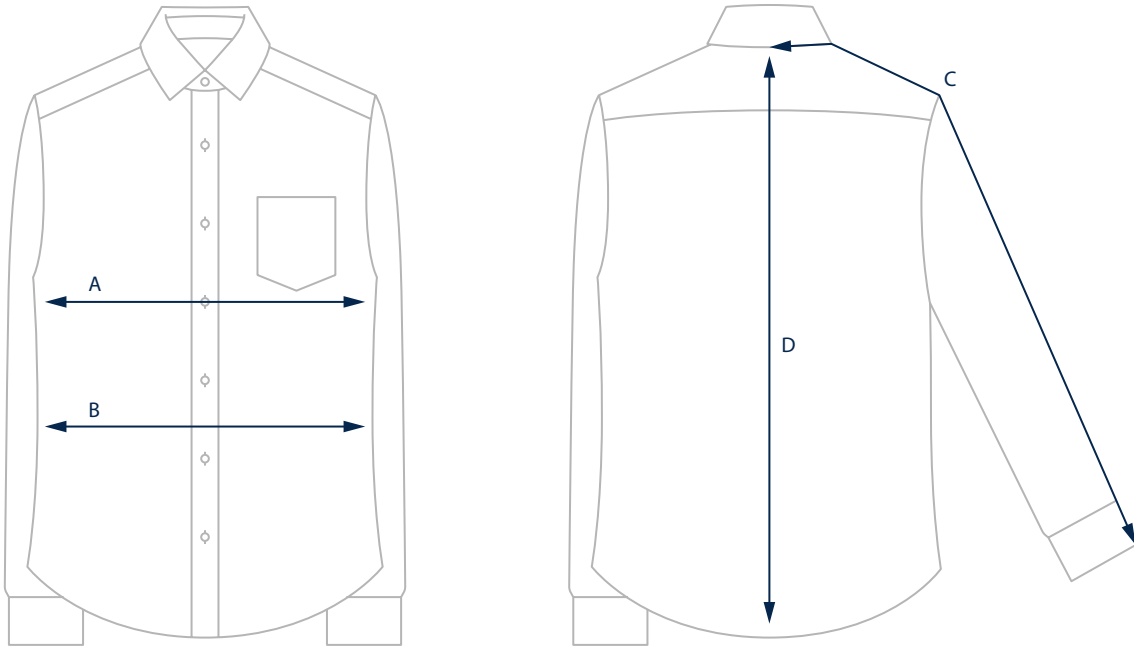
Measure from the back of your neck across the top of your shoulder to your elbow, and down to your wrist.

SIZE	S	M	L	XL	XXL
CHEST	35-37"	38-40"	41-43"	44-46"	47-49"
WAIST	29-31"	32-34"	35-37"	38-40"	41-43"
SLEEVES	32-33"	33-34"	34-35"	35-36"	36-37"

KNIT BUTTON-DOWN SHIRTS

GARMENT MEASUREMENTS

The most precise way of finding your size. Measure a garment you love and compare to our garment measurements.



SIZE	S	M	L	XL	XXL
A: CHEST	20 3/4"	22 1/4"	23 1/4"	25 1/4"	26 3/4"
C: SLEEVES	34"	35"	36"	37"	38"
D: LENGTH	28 5/8"	29 1/8"	29 5/8"	30 1/8"	30 5/8"