

INTERLOCK KNIT SHORTS

BODY MEASUREMENTS

Semi-fitted knit shorts



WAIST

Measure around your natural waist, keeping the tape a bit loose.

SHORT SIZE	XS	S	M	L	XL	XXL
WAIST	26–28"	29–31"	32–34"	35–37"	38–40"	41–43"

GARMENT MEASUREMENTS

The most precise way of finding your size.
Measure a garment you love and compare to our measurements.

A. WAIST

Measure around top of waistband.

B. LOW HIP

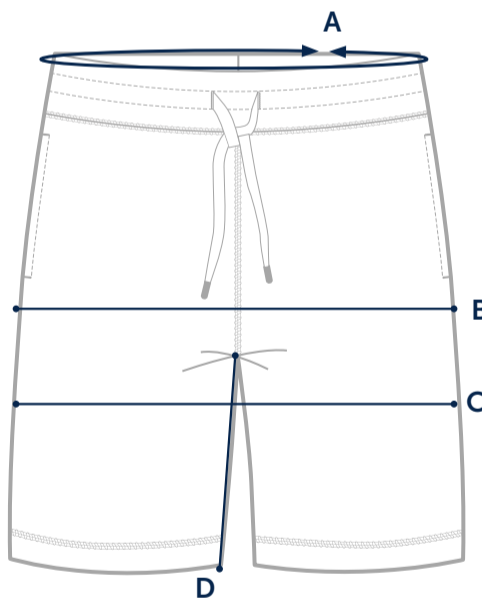
Measure across the widest area of the short. Double the measurement.

C. THIGH

Measure across thigh, 1 1/2" below intersection of crotch and inseam. Double the measurement.

D. INSEAM

Measure seam along inside leg.



SHORT SIZE	XS	S	M	L	XL	XXL
A: WAIST	25 1/2"	28 1/2"	31 1/2"	34 1/2"	37 1/2"	40 1/2"
B: LOW HIP	36"	40"	43"	46"	49"	52"
C: THIGH	24"	24 3/4"	25 1/2"	27"	28 1/2"	30"
D: INSEAM	8"	8 1/2"	9"	9 1/2"	10"	10 1/2"