

HEAVY CREW NECK TEE

# GARMENT MEASUREMENTS



## CHEST

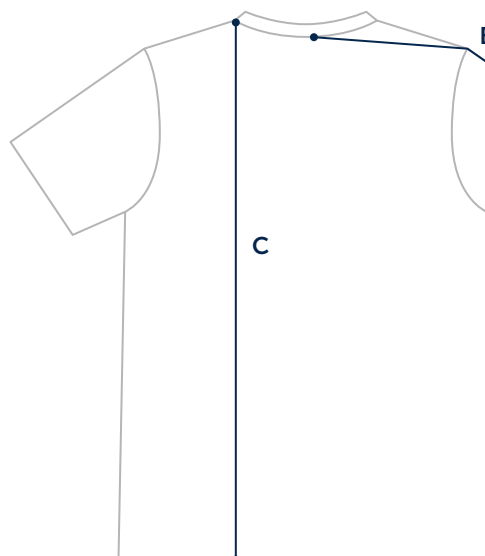
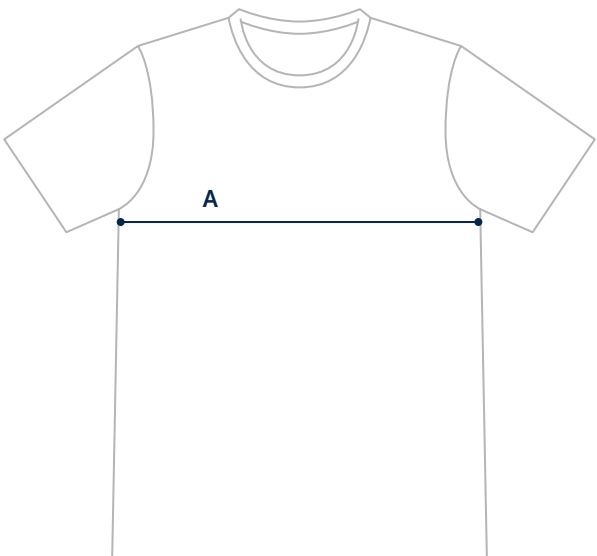
Measure under your arms around the fullest part of your chest.

SIZE	XS	S	M	L	XL	XXL
CHEST	32–34"	35–37"	38–40"	41–43"	44–46"	47–49"

# GARMENT MEASUREMENTS

The most precise way of finding your size.

Measure a garment you love and compare to our measurements.



## A. CHEST

Measure width 1" below arm hole.

## B. SLEEVE

Measure from center back to hem.

## C. LENGTH

Measure from high point shoulder to bottom hem.

SIZE	XS	S	M	L	XL	XXL
A: CHEST	17 3/4"	19 1/4"	20 3/4"	22 1/4"	23 3/4"	25 1/4"
B: SLEEVE	16 1/4"	16 7/8"	17 1/2"	18 1/8"	18 3/4"	19 3/8"
C: LENGTH	27 1/4"	27 1/4"	28"	29 1/4"	30 1/2"	31 3/4"

Looking for help with a size? Contact us at [help@woolandprince.com](mailto:help@woolandprince.com)