

# GARMENT MEASUREMENTS.



**CHEST**

Measure under your arms around the fullest part of your chest.

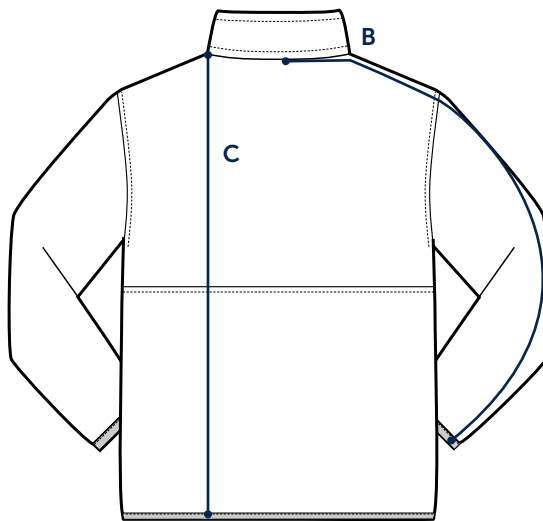
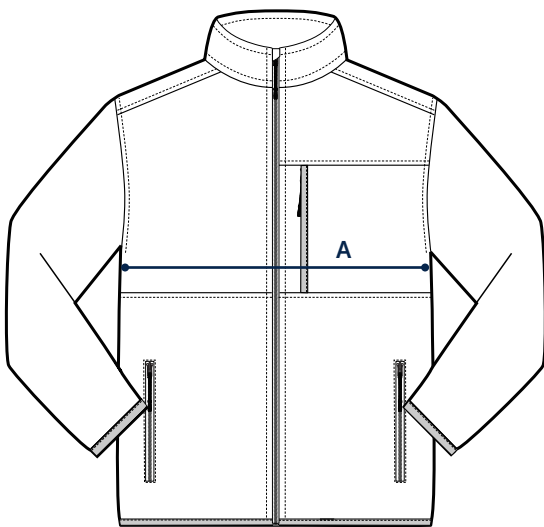
**SLEEVE LENGTH**

Measure from the back of your neck across the top of your shoulder to your elbow, and down to your wrist.

JACKET SIZE	S	M	L	XL	XXL
CHEST	35–37"	38–40"	41–43"	44–46"	47–49"
SLEEVE	32–33"	33–34"	34–35"	35–36"	36–37"

# GARMENT MEASUREMENTS

The most precise way of finding your size.  
Measure a garment you love and compare to our measurements.



**A. CHEST WIDTH**

Measure across chest, 1" below the armhole.

**B. SLEEVE LENGTH FROM CENTER BACK**

Measure down the length of the sleeve, starting at center back.

**C. LENGTH**

Measure from high point shoulder to bottom hem.

JACKET SIZE	S	M	L	XL	XXL
A: CHEST	21"	22 ½"	24"	25 ½"	27"
B: SLEEVE LENGTH	35 ½"	36"	36 ½"	37"	37 ½"
C: LENGTH	27 ¾"	28"	28 ⅝"	29 ¼"	29 ⅞"