

SHORT SLEEVE SHIRT

BODY MEASUREMENTS

NECK

Measure around the middle of your neck, leaving the tape loose.

WAIST

Measure around your natural waist, keeping the tape a bit loose.

CHEST

Measure around your torso, under your arms around the fullest part of your chest.



SLIM FIT MEASUREMENTS

This short sleeve button-down is in our "Slim Fit" - our modern, tapered fit. Also, our most popular fit.

| SIZE | XS | S | M | L | XL |
|-------|----------|----------|----------|----------|----------|
| NECK | 13 ½-14" | 14-14 ½" | 15-15 ½" | 16-16 ½" | 17-17 ½" |
| CHEST | 32-34" | 35-37" | 38-40" | 41-43" | 44-46" |
| WAIST | 26-28" | 29-31" | 32-34" | 35-37" | 38-40" |

REGULAR FIT MEASUREMENTS

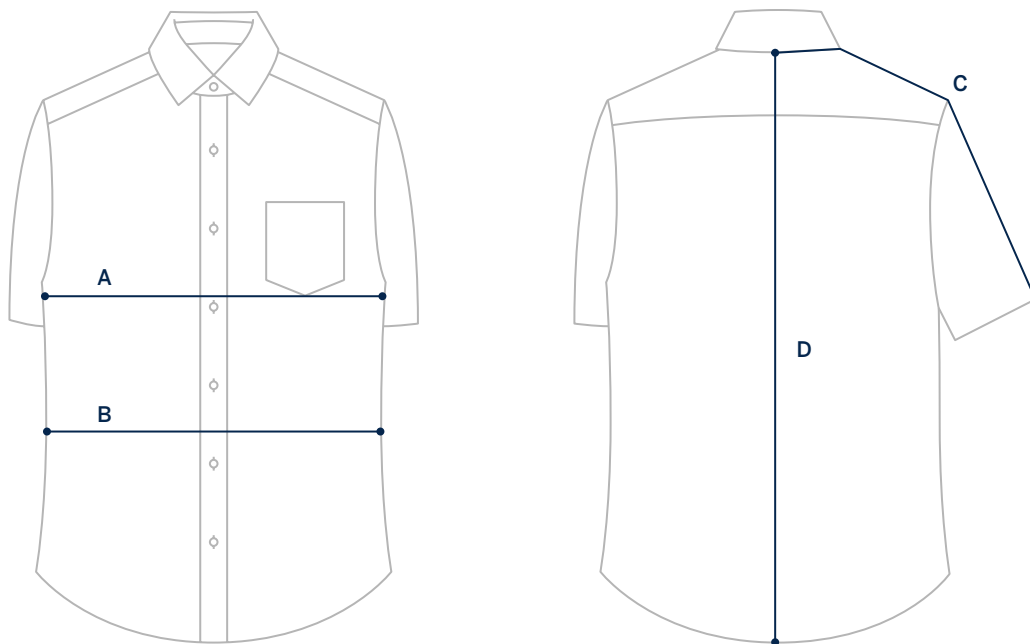
The short sleeve button-down is in our "Regular Fit" giving it a straight—instead of tapered—cut through the torso for improved untucked wearability. The front length is also an inch shorter than the back.

| SIZE | XS | S | M | L | XL | XXL |
|-------|----------|----------|----------|----------|----------|----------|
| NECK | 13 ½-14" | 14-14 ½" | 15-15 ½" | 16-16 ½" | 17-17 ½" | 18-18 ½" |
| CHEST | 33-35" | 36-38" | 39-41" | 42-44" | 45-47" | 48-50" |
| WAIST | 28-30" | 31-33" | 34-36" | 37-39" | 40-42" | 43-45" |

SHORT SLEEVE SHIRT

GARMENT MEASUREMENTS

The most precise way of finding your size. Measure a garment you love and compare to our garment measurements.



SLIM FIT MEASUREMENTS

This short sleeve button-down is in our "Slim Fit" - our modern, tapered fit. Also, our most popular fit.

| SIZE | XS | S | M | L | XL |
|------------|----------------------------------|----------------------------------|----------------------------------|----------------------------------|----------------------------------|
| A: CHEST | 18 ⁷ / ₈ " | 20 ³ / ₈ " | 21 ⁷ / ₈ " | 23 ³ / ₈ " | 24 ⁷ / ₈ " |
| B: WAIST | 17 ³ / ₈ " | 18 ⁷ / ₈ " | 20 ³ / ₈ " | 21 ⁷ / ₈ " | 23 ³ / ₈ " |
| C: SLEEVES | 17 ³ / ₈ " | 18 ¹ / ₂ " | 18 ⁷ / ₈ " | 19 ⁵ / ₈ " | 20 ³ / ₈ " |
| D: LENGTH | 29" | 29 ¹ / ₂ " | 30" | 30 ¹ / ₂ " | 31" |

REGULAR FIT MEASUREMENTS

The short sleeve button-down is in our "Regular Fit" giving it a straight—instead of tapered—cut through the torso for improved untucked wearability. The front length is also an inch shorter than the back.

| SIZE | XS | S | M | L | XL | XXL |
|------------|----------------------------------|----------------------------------|----------------------------------|----------------------------------|----------------------------------|----------------------------------|
| A: CHEST | 19 ³ / ₈ " | 20 ⁷ / ₈ " | 22 ³ / ₈ " | 23 ⁷ / ₈ " | 25 ³ / ₈ " | 26 ⁷ / ₈ " |
| B: WAIST | 18 ³ / ₈ " | 19 ⁷ / ₈ " | 21 ³ / ₈ " | 22 ⁷ / ₈ " | 24 ³ / ₈ " | 25 ⁷ / ₈ " |
| C: SLEEVES | 17 ¹ / ₂ " | 18 ¹ / ₄ " | 19" | 19 ³ / ₄ " | 20 ¹ / ₂ " | 21 ¹ / ₄ " |
| D: LENGTH | 29" | 29 ¹ / ₂ " | 30" | 30 ¹ / ₂ " | 31" | 31 ¹ / ₂ " |